

# Learning Plans

**“Your people are your greatest asset”,  
as the saying goes.**



Employees are most likely the biggest cost and management challenge in your organisation, and it is critically important to align employee development with organisational strategies.

Totara Learning Plans allow your employees to develop the specific competencies needed to improve performance in their present position or to prepare for new responsibilities. The plan provides quick and targeted access to relevant learning whether face to face events or e-learning; and enables employees to see their progress at a glance.

## Learning Plan templates

Create multiple learning plan templates based on user groups.

Competencies and courses can be automatically pulled into learning plans.

## Personalised learning

Users or managers can create learning plans for different areas of development, such as current and aspirational positions.

Learners can personalise plans by setting due dates, priorities and objectives.

Learners can use the development plan to manage the scheduling of their courses and other learning activities.

Additional competencies and courses can be requested by the learner or added by their manager.

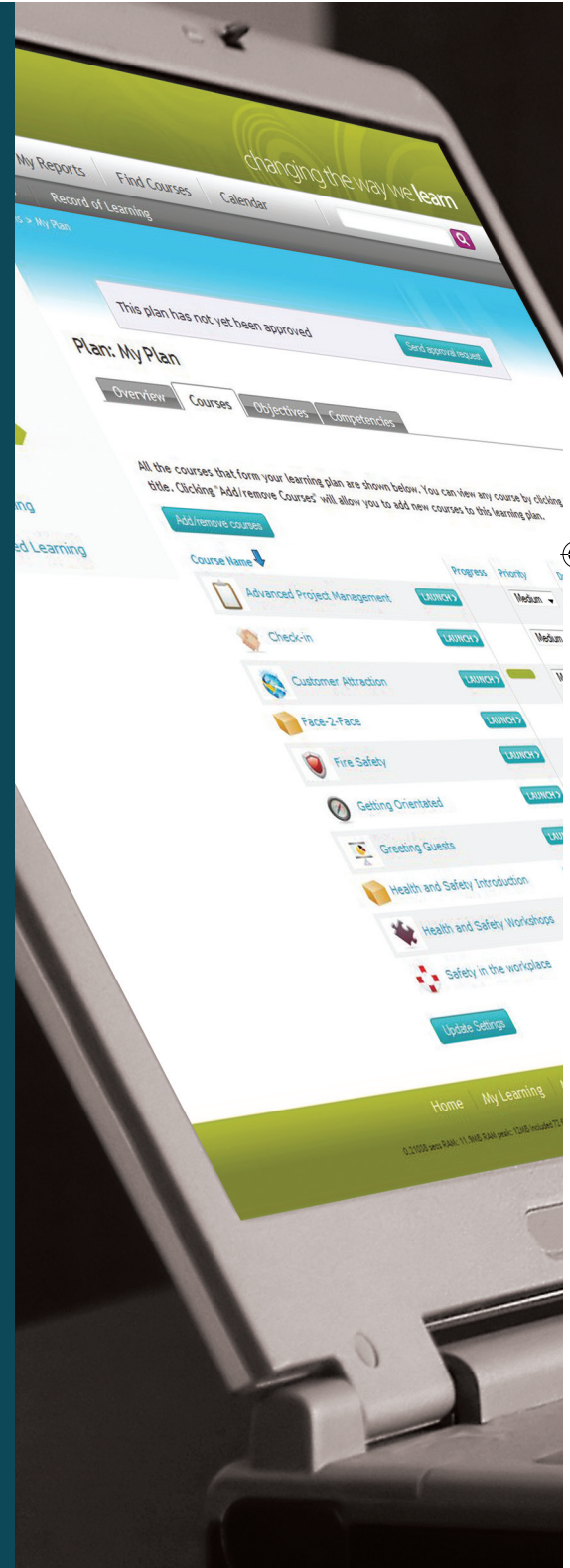
## Learning records

Completed learning plans contribute to an employee's record of learning.

Managers can monitor the ongoing progress of their team's development.

## Go to [www.totara.com](http://www.totara.com)

- Learn more about the key features of Totara
- Try our Totara Demo
- Contact a Totara Partner
- Subscribe online to the Totara service





“ We saved over **\$500k** on our LMS implementation ”

**THE NEW IDEA**

Innovate to succeed  
Innovate to succeed  
Innovate to succeed

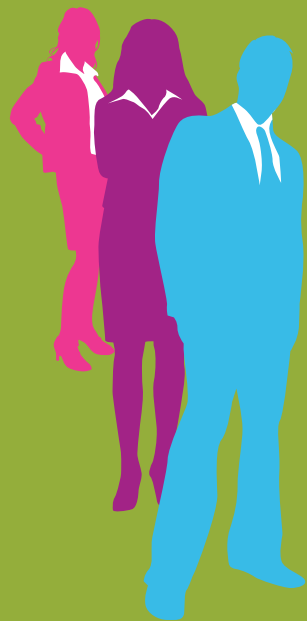
The solution delivered on every **aspect**

**GREAT PRODUCT SUPPORT**

simply **Excellent**

FELT GREAT TO BE COMPLIMENTED ON THE DESIGN OF OUR LMS

Open source = Freedom



Open for business  **totara**lms