

Social learning

Research shows that 70% of learning takes place in real-life, on-the-job experiences, so you need an LMS that supports informal and social learning activities.



Totara supports the popular 70:20:10 learning model which has a strong focus on informal and workplace learning. With Totara employees can network, share ideas and tap into expert networks. The sophisticated search facility also allows learners to access specific learning objects just in time to support their performance in specific tasks.

Many organisations make collaboration an active part of the overall learning process, using collaborative events as part of a planned, blended learning curriculum.

Totara supports social learning through a range of interactive activities including wikis, blogs, discussion forums, chats and other social networking and support tools.

Social networking

Wikis allow employees to collaboratively build a body of knowledge around key topics

Employees can publish to the wider organisation using blogs

Forums allow employees to create and engage in online, asynchronous discussions

Chat rooms allow for real-time, synchronous discussion

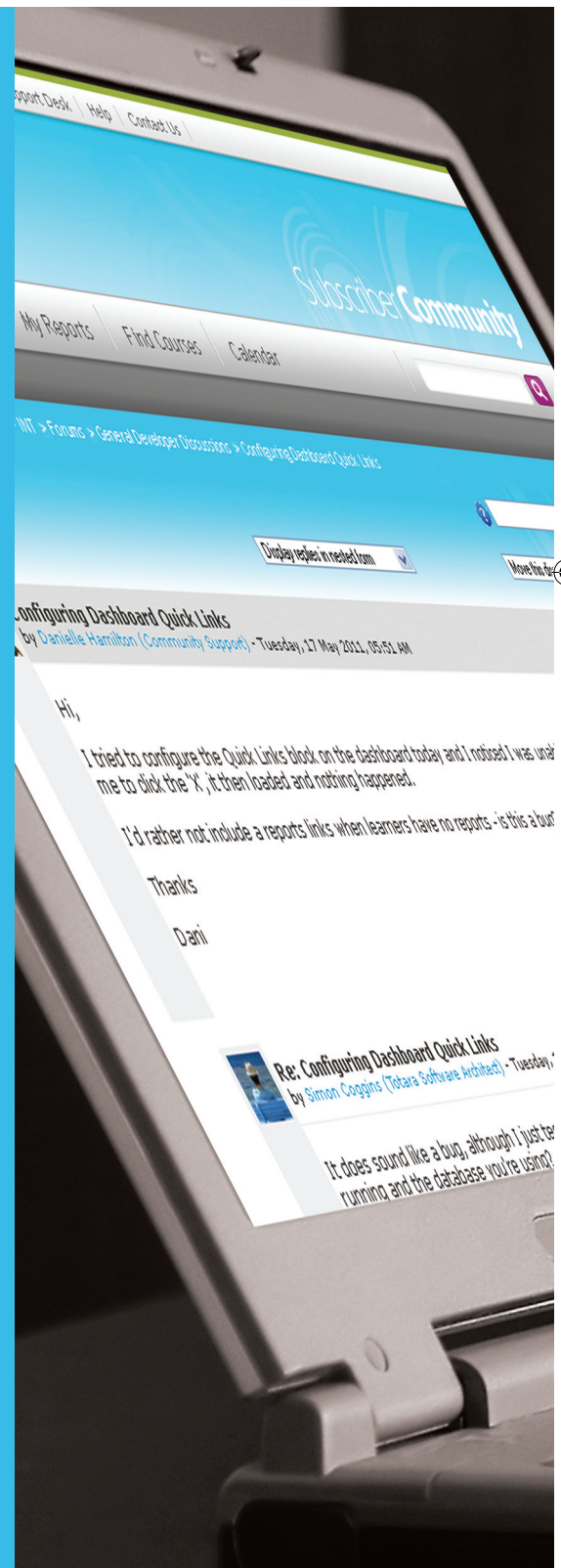
Support tools

Forums and news items can be published as RSS feeds, which employees can then access through their personal RSS Application such as Google Reader or MobileRSS.

Polls and Feedback can be conducted online to elicit feedback from the users about their learning or any other area you wish to investigate.

Go to www.totara.com

- Learn more about the key features of Totara
- Try our Totara Demo
- Contact a Totara Partner
- Subscribe online to the Totara service





“ We saved over **\$500k** on our LMS implementation ”

THE NEW IDEA ”

Innovate to succeed
Innovate to succeed
Innovate to succeed

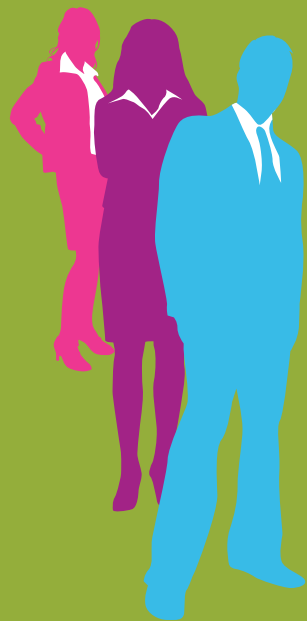
The solution delivered on every **aspect**

GREAT PRODUCT SUPPORT

simply **Excellent**

FELT GREAT TO BE COMPLIMENTED ON THE DESIGN OF OUR LMS

Open source = Freedom



Open for business  **totara**lms